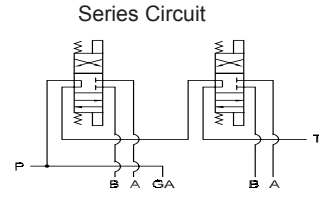
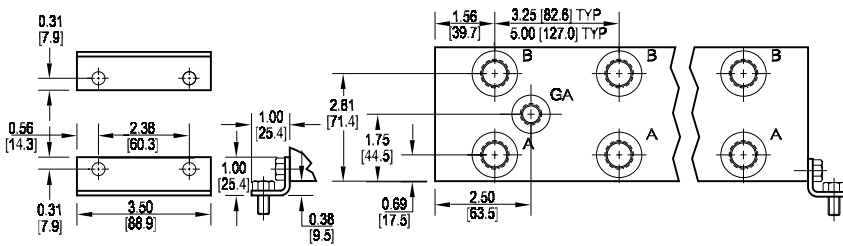
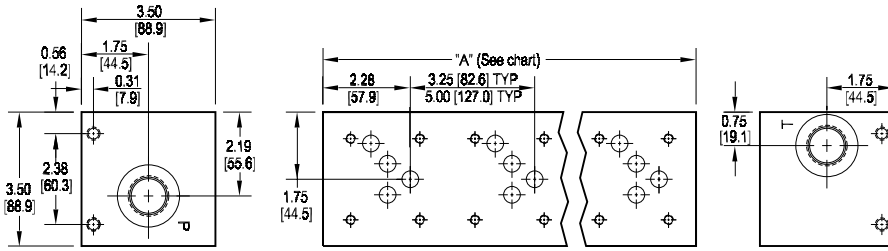


D05 Standard Flow Series Circuit Manifold



No. of stations	02	03	04
"A" length (code 3 spa.) inch [mm]	6.50 [165.1]	9.75 [247.7]	13.00 [330.2]
apx. weight alum lb [kg]	8 [4]	11 [5]	14 [7]
apx. weight iron lb [kg]	17 [8]	26 [12]	34 [15]
"A" length (code 5 spa.) inch [mm]	8.25 [209.6]	13.25 [336.6]	18.25 [463.6]
apx. weight alum lb [kg]	9 [4]	15 [7]	20 [9]
apx. weight iron lb [kg]	22 [10]	36 [16]	49 [22]

All mounting hardware is supplied.
See page 62 for itemized list.

Port code	Valve mtg.	Manifold mtg.
P, S	0.25-20 UNC x 0.75 [19] DP	0.31-18 UNC x 0.44 [11.1] DP
B, M, T	M6 ISO 6H x 0.75 [19] DP	M8 ISO 6H x 0.44 [11.1] DP

Specifications, descriptions, and dimensional data are subject to correction or change without notice or incurring obligation.
Download latest catalog page revisions at www.daman.com.

Ordering Information

Material	Valve Pattern	Circuit	No. of Stations	Valve Spacing	Port Threads	/	Options
----------	---------------	---------	-----------------	---------------	--------------	---	---------

Material	
A	Aluminum - 6061-T6 3000† psi • 20.7 MPa
D	Ductile Iron - D4512 5000† psi • 34.5 MPa
N	Electroless Nickel Coated Ductile Iron - D4512 5000† psi • 34.5 MPa

† Working pressure should be considered in accordance with ISO 4413 to determine appropriate material type.

Circuit	
S	Series Circuit Standard Flow

Valve Spacing	
3	3.25 inch 82.6 mm
5	5.00 inch 127.0 mm

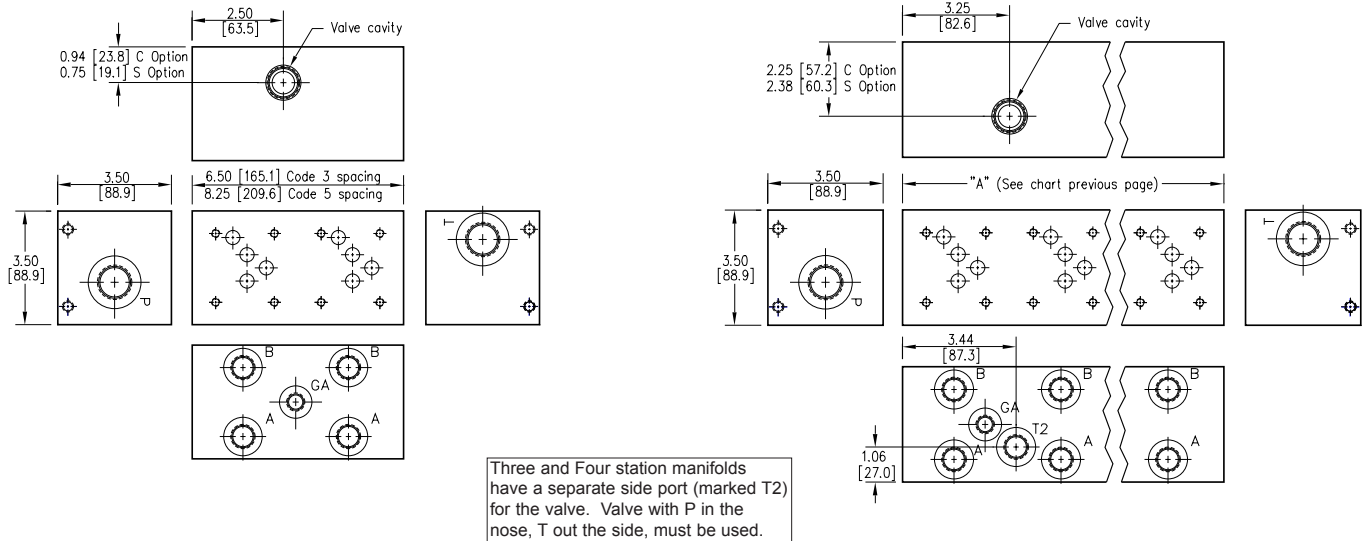
Options	
See next page for available options and ordering codes.	

Valve Pattern	
D05	ISO-4401-05-04 NFPA T3.5.1-D05 See Tech Information

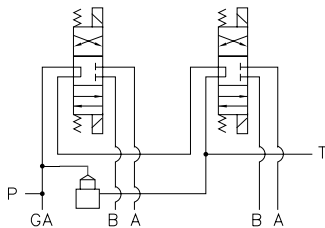
No. of Stations	
Aluminum	
02...04	Available with spacing code 3
02...04	Available with spacing code 5
Ductile Iron	
02...04	Available with spacing code 3
02...04	Available with spacing code 5

Port Threads				
	P & T	A & B	GA	
P	NPTF • ANSI B1.20.3	0.75	0.50	0.25
S	SAE • ISO 11926	-12	-8	-6
B	BSPP • ISO 1179	0.75	0.50	none
M	ISO • ISO 6149	M27	M18	none
T	BSPT • ISO 7	0.75	0.50	none

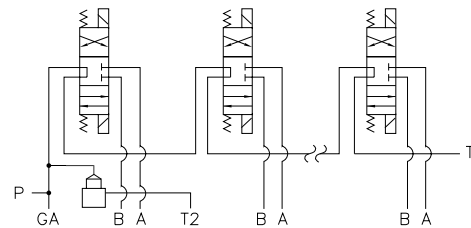
Options - D05 Standard Flow Series Manifold



Series Circuit with Cavity - (2) station



Series Circuit with Cavity - (3) or (4) station



Ordering Information



Cavity	
Omit if cavity not required.	
C	Common cavity: 2-station has solenoid clearance. 3 & 4 station does not have solenoid clearance. C-10-2 (P in nose)
S	Sun Cavity: T-3A (P in nose) See Tech Info for valves.

Port Code (ref.)	T2 Port Size
	3 and 4 Station Manifold
P	0.50 NPTF • ANSI B1.20.3
S	-8 SAE • ISO 11926
B	0.50 BSPP • ISO 1179
M	M18 ISO • ISO 6149
T	0.50 BSPT • ISO 7